

**7 SALTERFORD ROAD  
HUCKNALL  
NOTTINGHAMSHIRE  
NG15 6GA**



**£190,000**

**VIEWING**

By appointment through the selling agent on (0115) 9680809  
7 High Street, Hucknall, Nottingham, NG15 7HJ.

**TENURE**

Freehold

- Semi Detached Property
- Three Bedrooms
- Modern Kitchen
- Wet Room
- Good Sized Garden
- Close To Local Amenities
- Viewing Highly Recommended

## 7 SALTERFORD ROAD, HUCKNALL, NOTTINGHAMSHIRE

This spacious three bedroom, semi detached property is located on a quiet street in a popular area of Nottingham close to local amenities.

The property offers a spacious living room, modern kitchen and an extension, whilst the first floor has three good sized bedrooms and a wet room with separate toilet. Outside the property has gardens to the front side and rear.

Entrance door into:

### HALLWAY

With stairs to the first floor landing, access to the living room, radiator, power and ceiling light points.



### LOUNGE

20'10" x 11'3" A spacious family room with windows to the front and rear, feature fireplace, radiator, power and ceiling light points.



**7 SALTERFORD ROAD, HUCKNALL, NOTTINGHAMSHIRE**

**KITCHEN**

**9'2" x 8'11"** Fitted with a range of wall and base units in a brown wood finish with coordinating roll top work surfaces, part wall tiling, space and plumbing for a washing machine, space and plumbing for a fridge freezer, integrated oven, integrated four ring hob, extractor fan, single drainer sink with mixer tap, window to the rear, radiator, power and ceiling light points.



**EXTENSION**

An extension to the side of the property with multiple rooms for various uses, window, radiator, power and ceiling light points.



**7 SALTERFORD ROAD, HUCKNALL, NOTTINGHAMSHIRE**

**FIRST FLOOR LANDING**

With access to all the bedrooms, the wet room and the W.C., power and ceiling light points.

**BEDROOM ONE**

10'7" x 13'2" With window to the front, radiator, power and ceiling light points.



**BEDROOM TWO**

9'10" x 12'4" With window to the rear, radiator, power and ceiling light points.



**7 SALTERFORD ROAD, HUCKNALL, NOTTINGHAMSHIRE**

**BEDROOM THREE**

**10'6" x 7'2"** With window to the front, radiator, power and ceiling light points.



**BATHROOM**

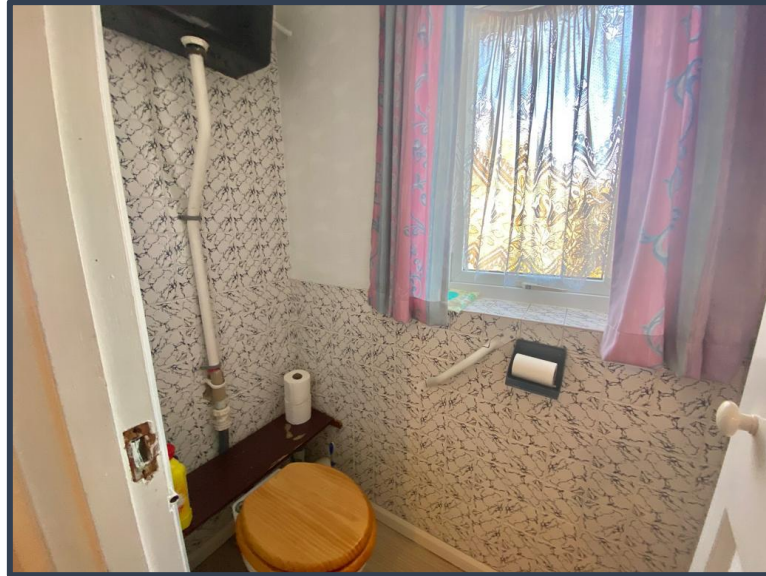
Wet room with shower, wash hand basin, fully tiled walls, opaque windows and ceiling light point.



**7 SALTERFORD ROAD, HUCKNALL, NOTTINGHAMSHIRE**

**W.C.**

With a W.C., window, part tiled walls and ceiling light point.



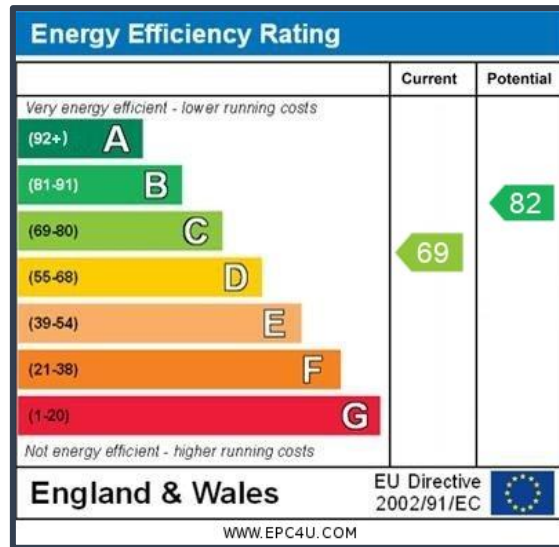
**OUTSIDE**

With sections laid to lawn to the front, side and rear and concrete paths all enclosed with fences.



# 7 SALTERFORD ROAD, HUCKNALL, NOTTINGHAMSHIRE

## EPC GRAPH



## ADDITIONAL INFORMATION

**Local Council** – Ashfield District Council

**Council Tax Band** – A

**Primary School** – Holgate Primary and Nursery School

**Secondary School** – Holgate Academy

**Stamp Duty on Asking Price:** N/A (Additional costs may apply if being purchased as a second property)

## **7 SALTERFORD ROAD, HUCKNALL, NOTTINGHAMSHIRE**

### **AGENTS NOTES**

Whilst we endeavour to make our sales particulars accurate and reliable, if there is any point which is of particular importance to you, please contact the office and we will be pleased to check the information. Do so, particularly if contemplating travelling some distance to view the property.

All measurements are approximate and quoted in imperial and are for general guidance only and whilst every attempt has been made to ensure accuracy, they must not be relied on.

The fixtures, fittings or appliances referred to have not been tested and therefore no guarantee can be given that they are in working order.

Internal photographs are reproduced for general information and it must not be inferred that any item shown is included with the property.

### **MORTGAGE ADVICE**

Arranging the right mortgage is just as important as selecting the right house. Need2View are happy to introduce clients to a completely and utterly independent mortgage advisor who can canvas the whole marketplace.

They can select the best and most appropriate mortgage tailored to suit each individual purchaser's needs and requirements and relative to their own unique personal circumstances. Such advice can be accessed free of charge\* and without any obligation. Your home is at risk if you do not keep up repayments on your mortgage or any other loans secured against it.

\* Initial consultation is on a no fee basis although a fee may be charged for mortgage arrangement.

### **THINKING OF SELLING**

It is important that a fair, accurate and representative market appraisal is given when thinking of selling and owners should obtain advice to take into account economic conditions, the size, standard, condition, location of a property, market conditions within the area and the likely demand for a particular type of property.

Need2View are happy to come and visit you at your convenience in or out of office hours, weekdays or weekends by appointment and will offer you the advice that you need to make an informed decision.

We offer a range of services and so will listen to what you want and need and tailor our services to suit your requirements. Our fees are flexible and will reflect the services you choose ensuring that you receive the best value for money. We use our expertise and experience to maximise the value of your home and can also offer help and assistance in connection with an on-going purchase, whether or not that property is being purchased through ourselves.

### **THINKING OF RENTING**

Letting a property is not just simply a question of finding a tenant, it is about finding the right tenant which involves making in-depth credit checks, enquiries and referencing to ensure that prospective tenants are the best that they can be.

The secret of achieving the highest level of property management is to be actively involved in and *manage* the rental property, collecting rents is not enough. Strong and proactive management with regular contact with both tenants and landlords and frequent inspections with condition reports being provided on a regular basis will help to ensure that our landlords get the best possible service.

We have a hands-on and practical style of approach and aim at all times to act on our client's behalf, in their best interests and in accordance with their instructions protecting, maintaining and enhancing our client's investment.